

How to play

Each player plays individually. One after the other, throw the die, which will tell you if you need to spell a word using sign language or using the laminated letters. Then, pick a card and spell the word corresponding to the picture on the card using either the letters or sign language.

The other players need to pay attention to what you are doing and check your spelling. If you are right, then you keep the card. If you are wrong, you put the card back into the deck and it's another player's turn. You repeat these actions until there are no cards in the deck anymore.

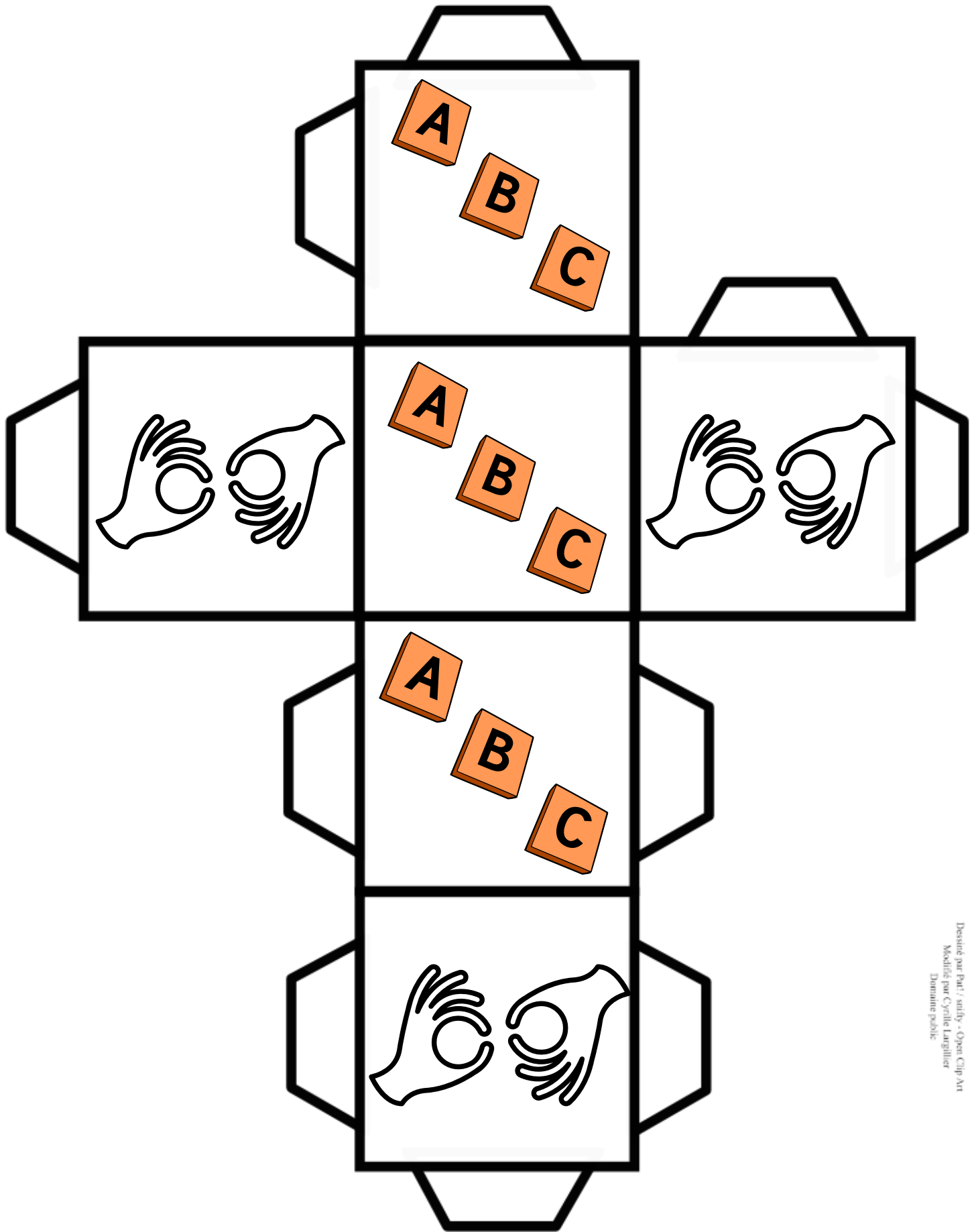
The aim of this game is to have the highest number of cards when the deck is empty. So when there isn't any cards anymore, count all of the cards you won during the game, and the winner is the player whose number of cards is the highest! Congratulations!

Note for teachers

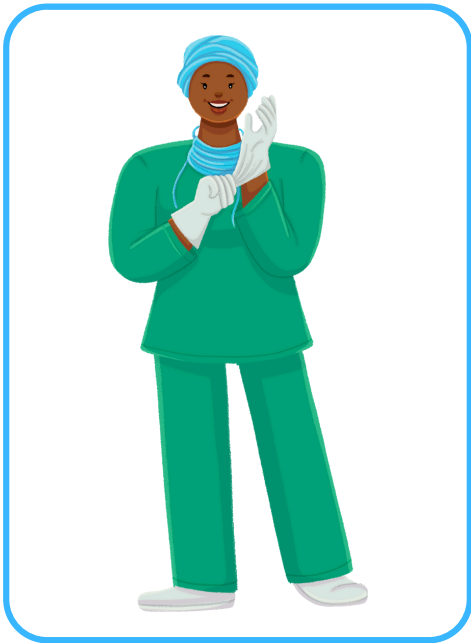
Feel free to only use the material that suits your lesson topic. Blank cards are to be found after the completed cards. You may fill them with pictures that suit the topic to be studied or add words that you find relevant.

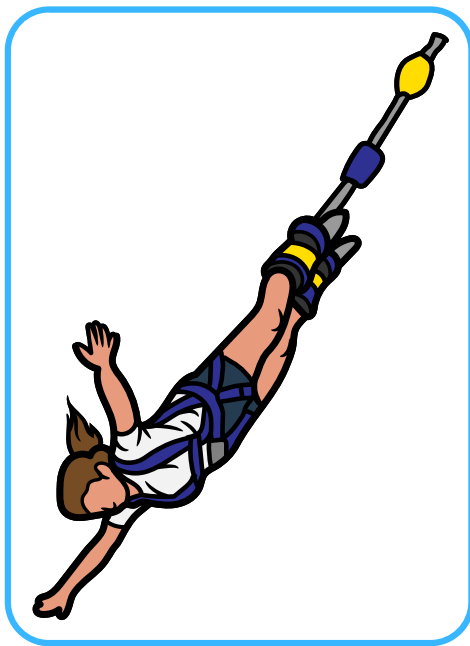
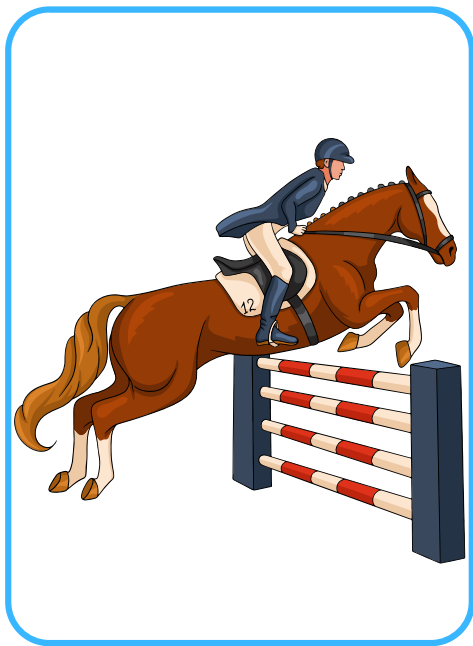
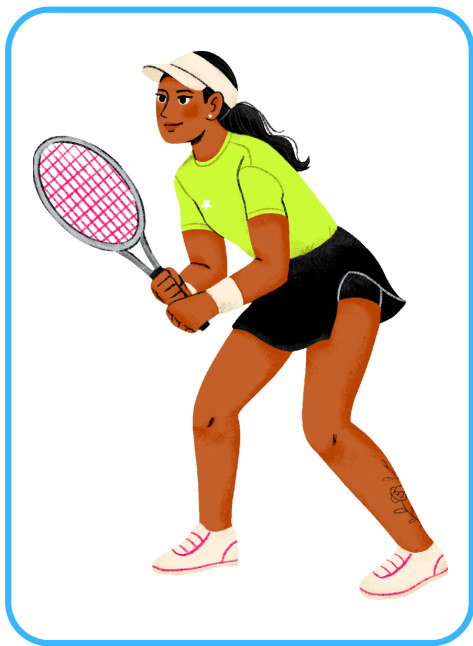
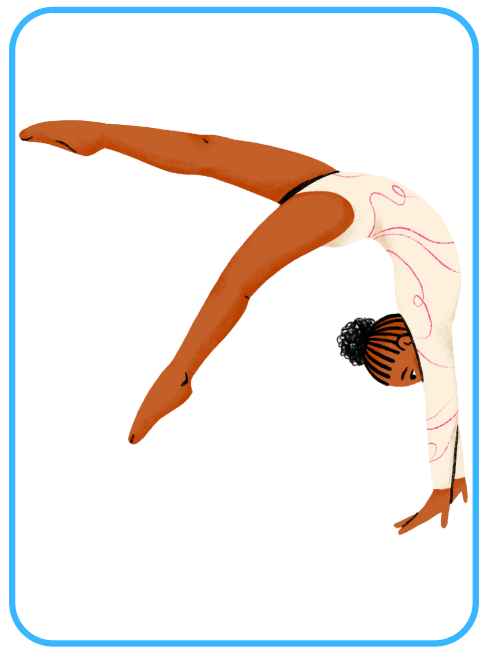
Prior to playing with your pupils, cut the die and fold it. Cut the cards you need and the alphabet letters and laminate them if possible for future use. Prepare your pupils to use sign language by showing them how to sign each letter (by yourself or with a video, for example).

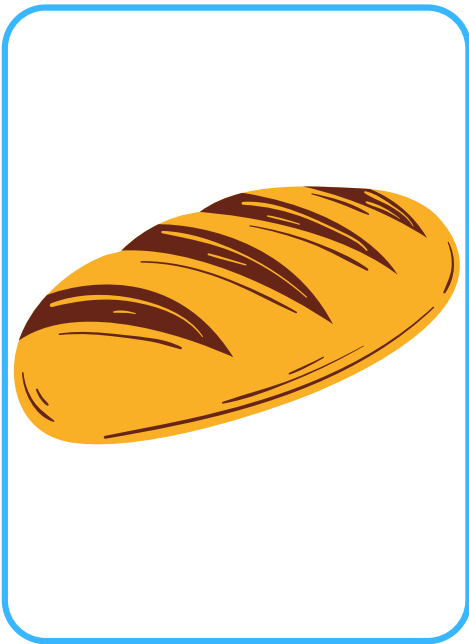
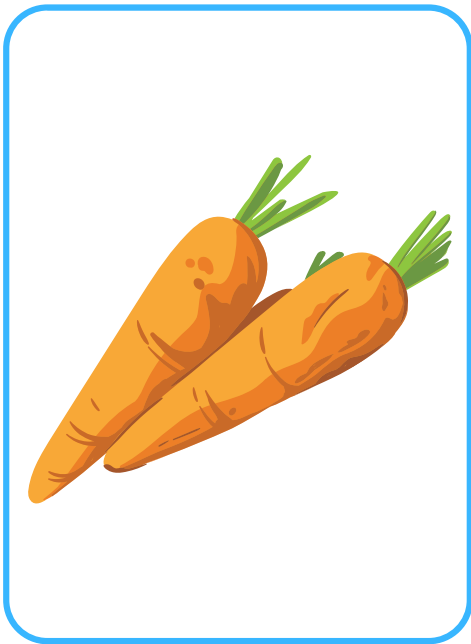
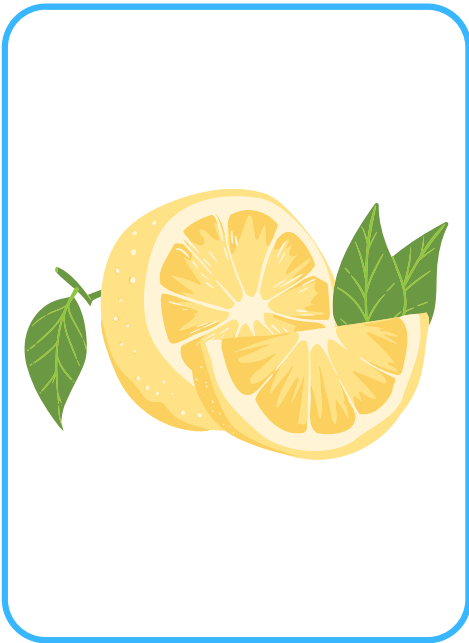
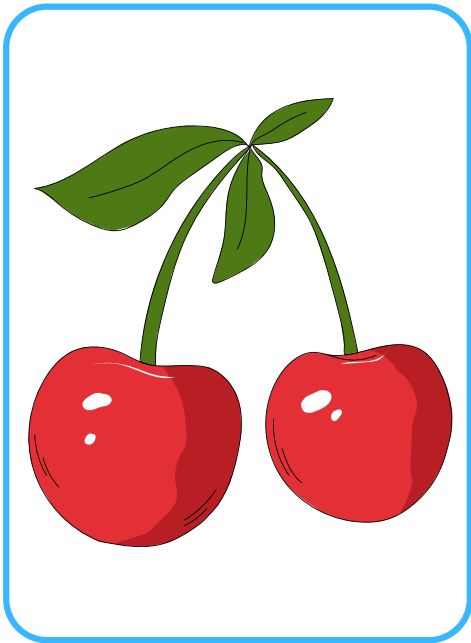
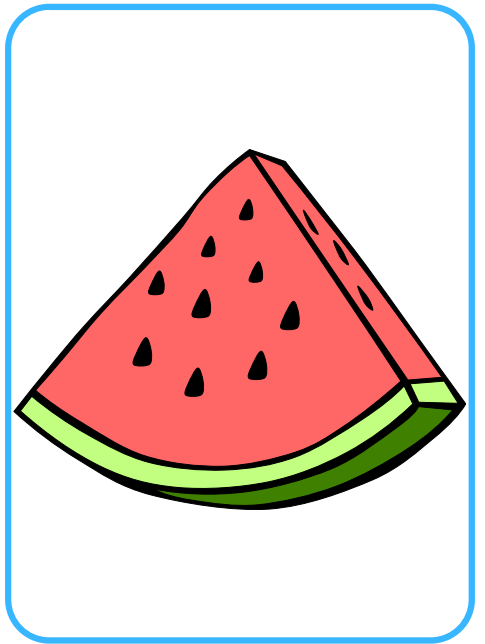
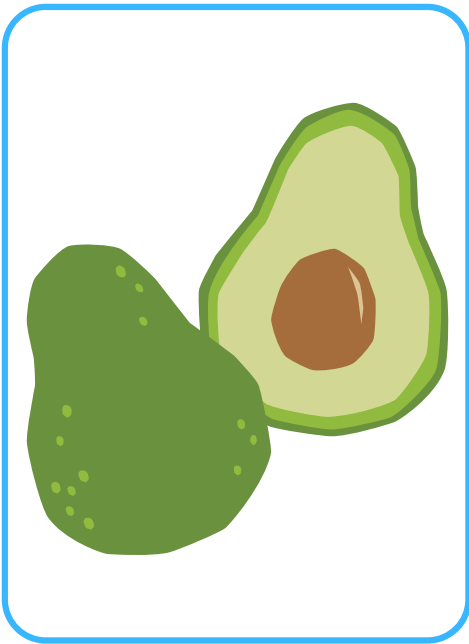
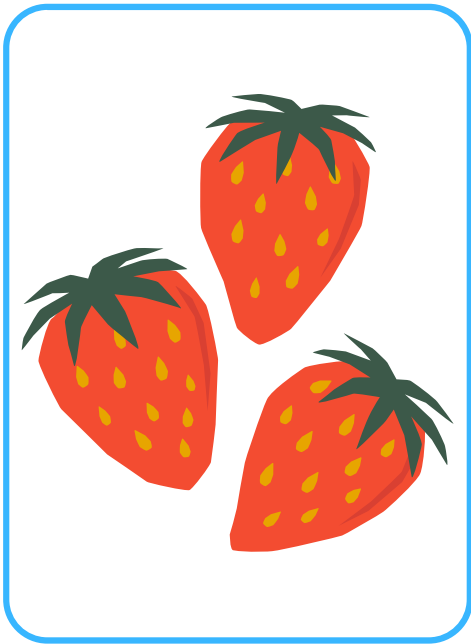
This game was designed particularly for ADHD students, as sign language and laminated letters have been found to help them study foreign language spelling. This game may however be used with any pupils of any age with or without learning disabilities.

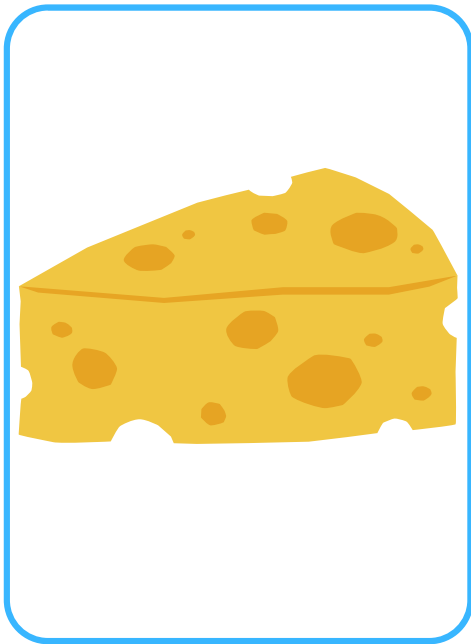
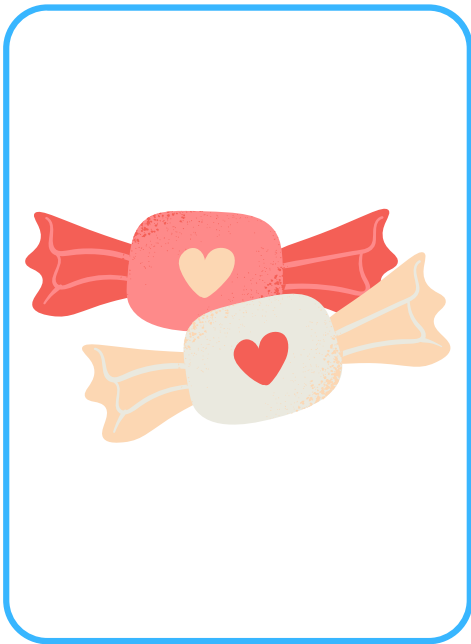
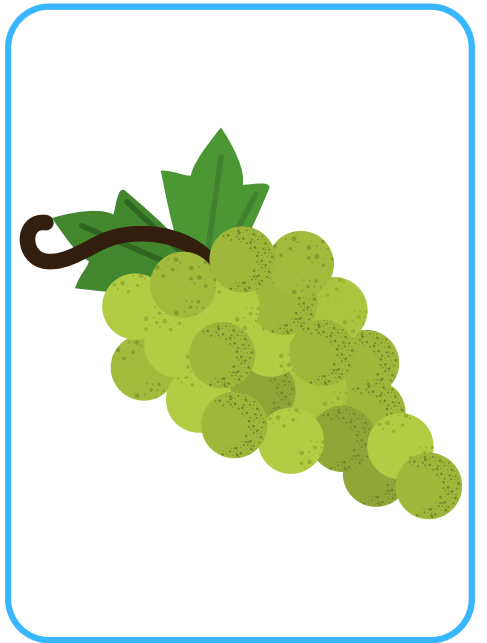
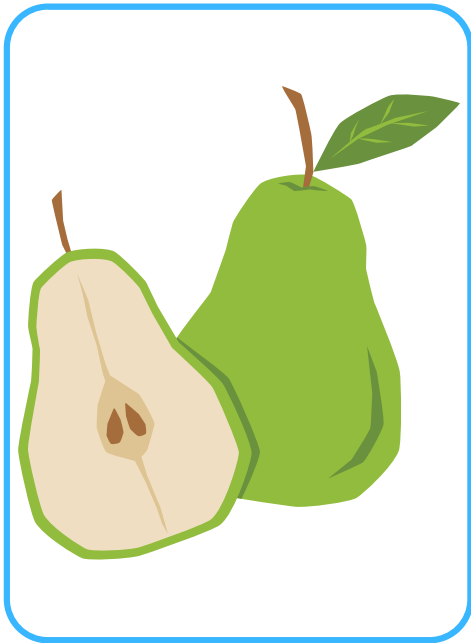
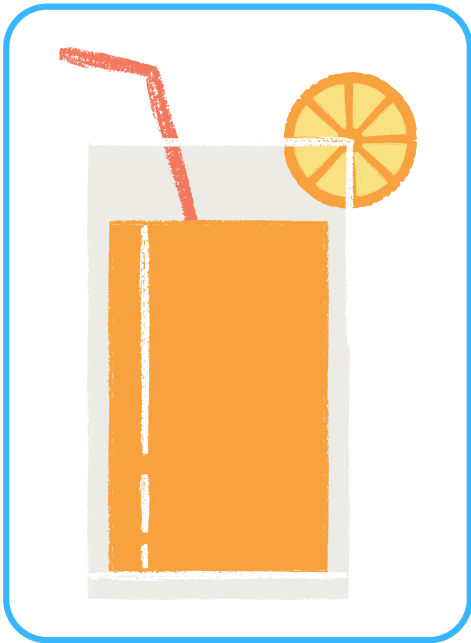
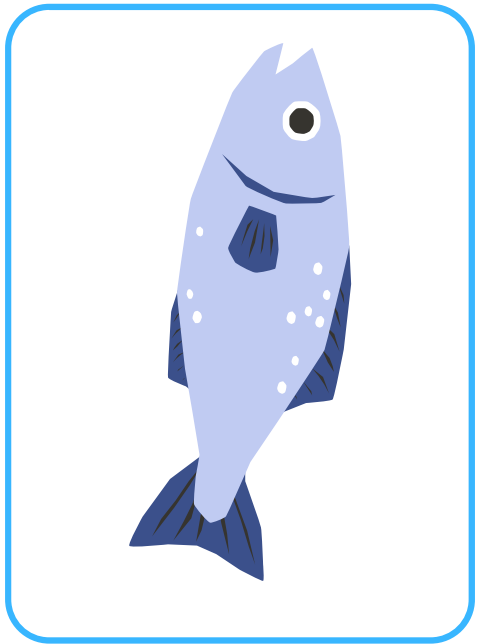
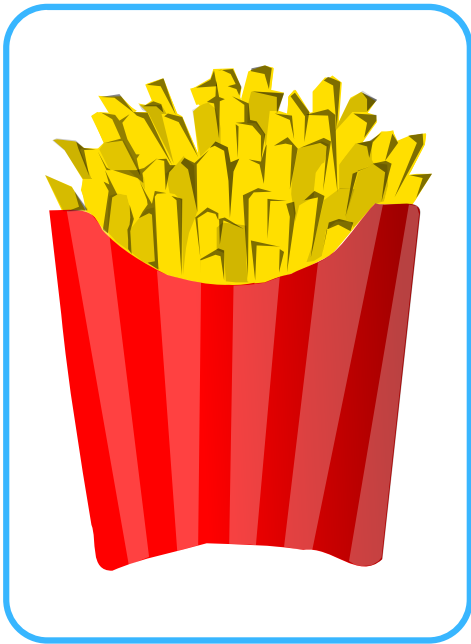


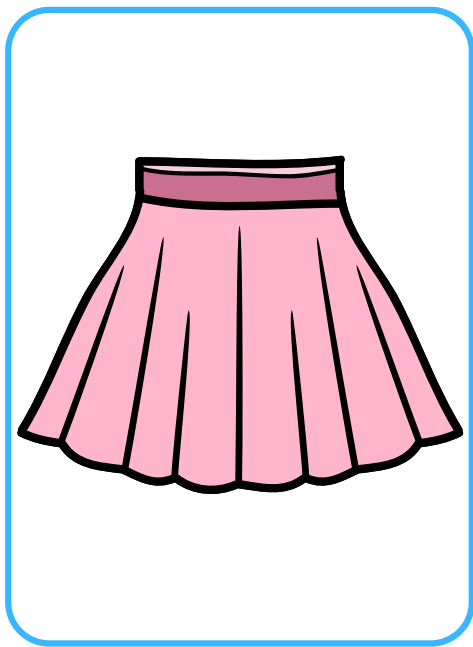
Devisé par Paul / snilly - Open Clip Art
Modifié par Cécile Langlier
Domaine public

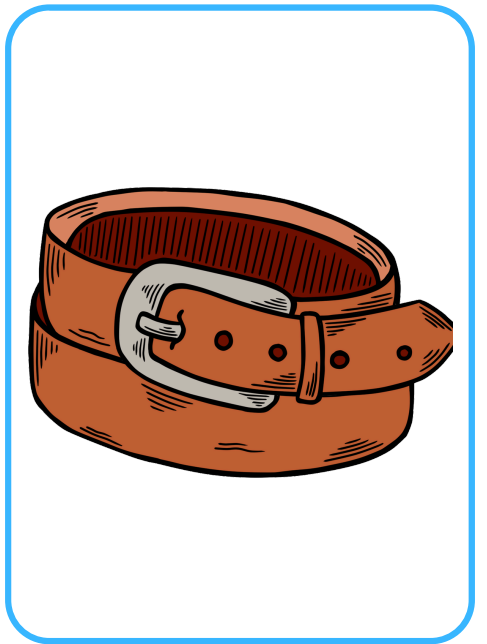
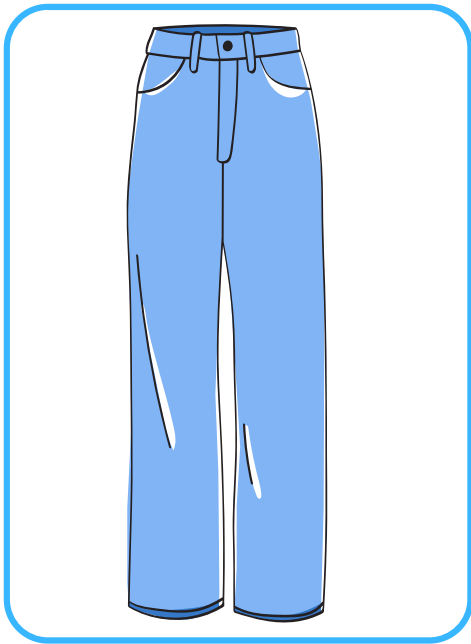
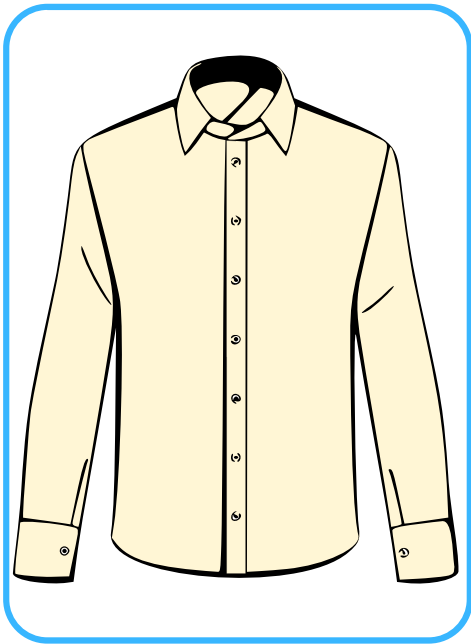




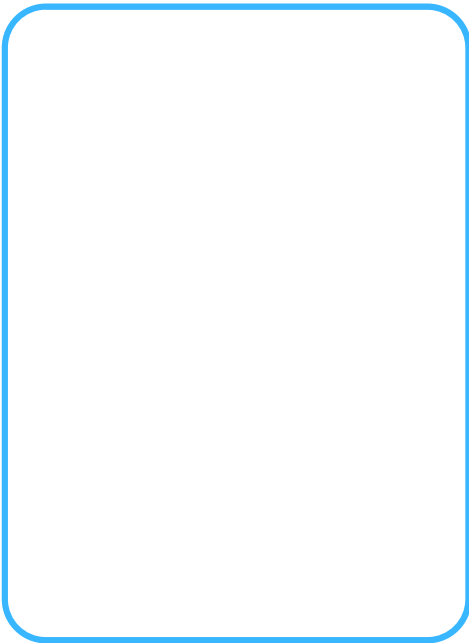










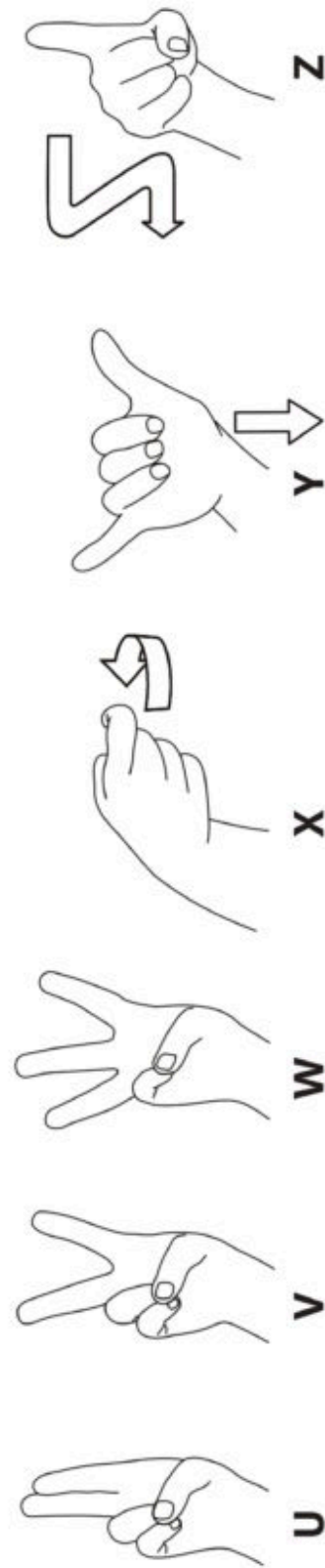
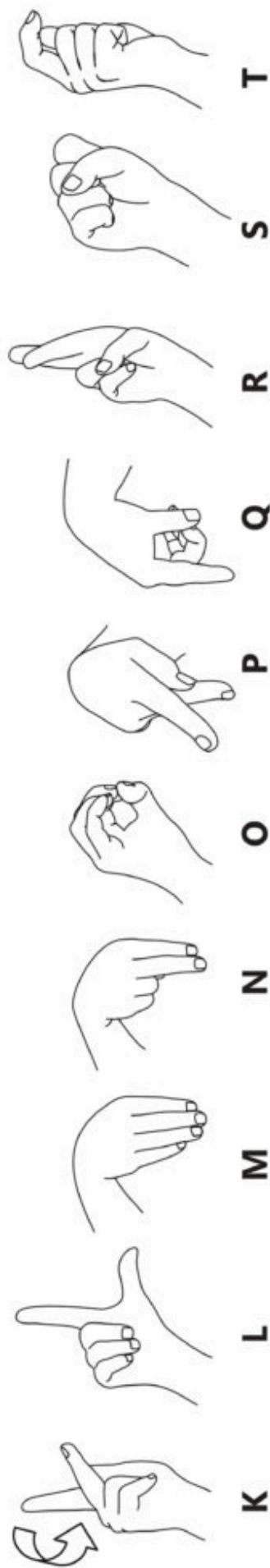
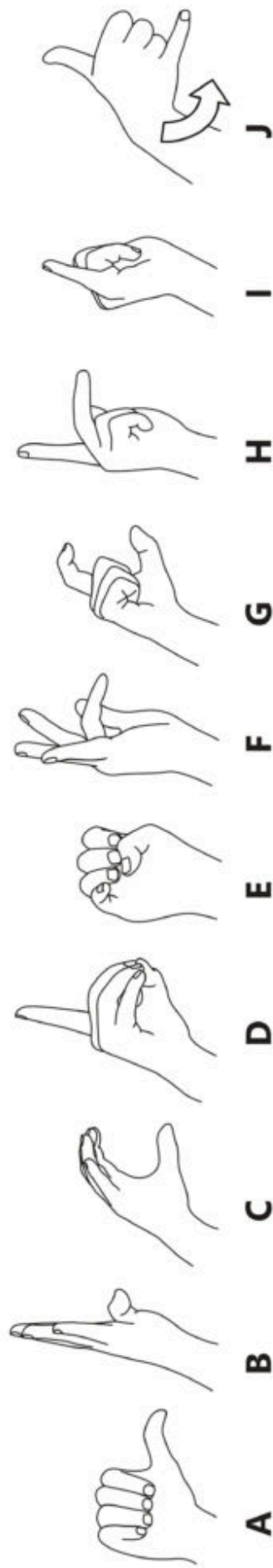








- L'ALPHABET EN LANGUE DES SIGNES -



A	B	C	D	E	F	G
H	I	J	K	L	M	N
O	P	Q	R	S	T	U
V	W	X	Y	Z	A	B
C	D	E	F	G	H	I
J	K	L	M	N	O	P
R	S	T	U	V	W	Y

A	B	C	D	E	F	G
H	I	J	K	L	M	N
O	P	Q	R	S	T	U
V	W	X	Y	Z	A	B
C	D	E	F	G	H	I
J	K	L	M	N	O	P
R	S	T	U	V	W	Y